

SMX ModelMerger

3D Software for combining overlapping 3D images

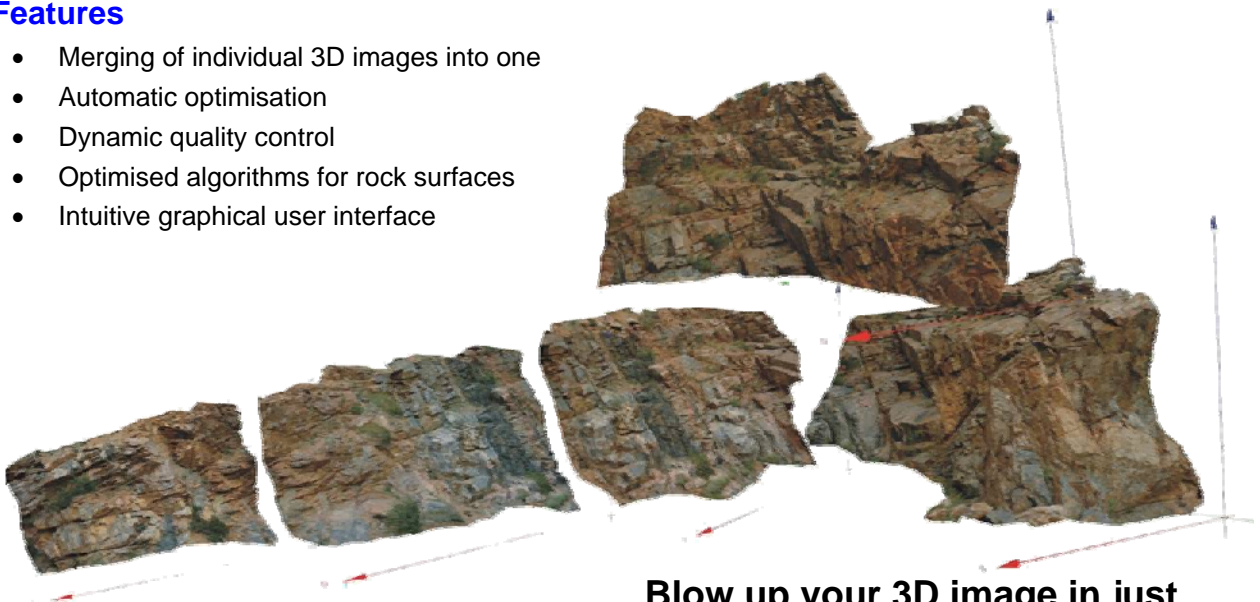


English

Extend the capabilities of ShapeMetriX3D

Features

- Merging of individual 3D images into one
- Automatic optimisation
- Dynamic quality control
- Optimised algorithms for rock surfaces
- Intuitive graphical user interface



Benefits

- Results directly compatible to JMX Analyst
- Model complex geometries - corners, caves, free ends, etc.
- Increase resolution of 3D images
- Increase acquired area
- No reference points required

Blow up your 3D image in just a few steps

