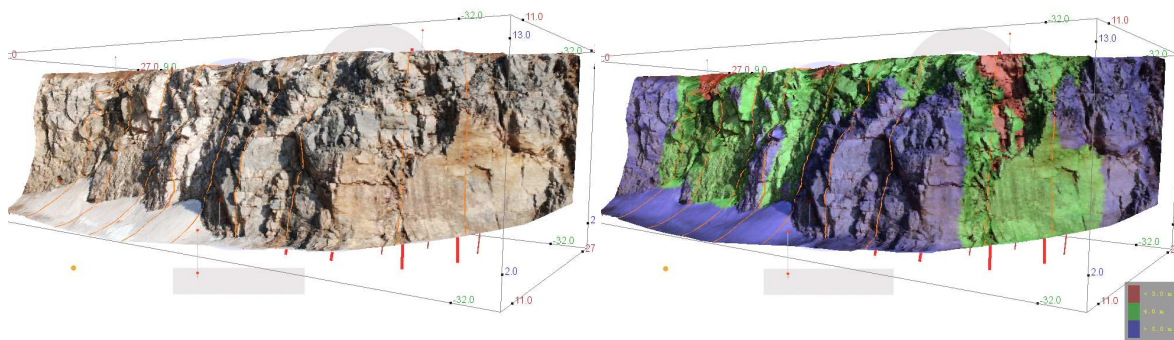


Surveying of complex shapes even easier to handle

The most recent version of the BlastMetriX3D software processes several photos taken from various locations in one single 3D image. Geometrically demanding bench faces such as free corners are comprehensively surveyed. The concept of determining minimum burden in all spatial directions is especially advantageous.

The connection (merging) of several 3D images also connects large blast sites into a single 3D model.

For more information please contact office@3gsm.at



For more information please contact office@3gsm.at

3GSM - Simply Measure!